

The *galleries* at Capitol Crossing

Art *from*





The *galleries* at Capitol Crossing

Art *from*



Art *from*

The William Louis-Dreyfus Foundation

presented by

Property Group Partners



The *galleries* at Capitol Crossing

Exhibition Installed
October 2020



Anonymous

Late 18th Century

British and Scottish botanists and surgeons led a movement to document the natural history of the subcontinent.

The East India Company, initially established as the British trading company and eventually a major governing power over parts of the subcontinent, recognised the need for this scientific research. Its practice was therefore adopted as official policy and resulted in the collection of rare species of flora and fauna. The specimens were preserved in the newly established Royal Botanic Garden in Calcutta and the Barrackpore Menagerie.

As part of the documentation process, Indian artists were hired to illustrate the scientific specimens. Sets of the watercolours and drawings remained in archives in India, while duplicates were sent to the East India Company's Library in London. Natural history enthusiasts including Marquis Wellesley, Governor-General of Bengal (1798-1805) and Lord Clive, Governor of Madras (1798-1803) also amassed personal collections of such works.

[200 Mass / Conference Center](#)

Series of Fish

Digital prints on paper
17" x 24"

Reproduced from original artwork
Watercolor on paper
8" x 10"



Robert Birmelin

American b.1933

Educated at The Cooper Union School of Art and Yale University's School of Art, Robert Birmelin has been inspired by the streets of New York City, painting realistic images of movement, focus, selective attention and the relationship between the figures on the canvas and the viewer.

Birmelin's work is included in the collections of the Metropolitan Museum of Art and the Museum of Modern Art, New York; the Hirshhorn Museum and Sculpture Garden and the Smithsonian American Art Museum, Washington, DC; and the Museum of Fine Arts, Boston. He has taught at over 40 colleges, universities and art schools throughout the United States. Birmelin lives and works in New Jersey.

[250 Mass / Floor 1 / Gallery 4](#)

Elevator/Street

Detail
1968
Oil on canvas
77" x 72"



Gideon Bok

American b.1966

Gideon Bok attended Hampshire College, the New York Studio School and received a master's degree from Yale University School of Art. "One of the issues specific to painting that interests me is the idea that the painting is a single static image (or depicted moment of consciousness) that is made up of thousands of moments of consciousness, or thoughts, each represented by a gesture, mark, or impulse on the surface. In this way, painting collapses time in a specific way."

Bok has received a Guggenheim Fellowship and a Hassam, Speicher, Betts and Symonds Fund Purchase Award, The Academy of Arts and Letters. His work is represented in numerous public and private collections, including the American Academy of Arts and Letters, New York; the Virginia Museum of Fine Art, Richmond; and the Farnsworth Art Museum in Rockland, Maine. Bok, who lives and works in Maine, has taught painting and drawing at Hampshire College.

[250 Mass / West Gallery 4](#)



The Linchpin Triptych

2000-2001
Oil on linen
79" x 147"



Edmund Chamberlain

English b.1968

Edmund Chamberlain's paintings and detailed, large-scale graphite drawings depict subjects that are often disregarded or overlooked. He explains that "it is the rendering of the small forms – the shape and scale of a branch, the line where trees meet sky, the spiral twist of a dried leaf – in such a way as not to distract from the whole picture that propels my daily work."

Chamberlain studied at Newcastle University. He received the Elizabeth Greenshields Foundation Award, the Pollock-Krasner Foundation Award and was shortlisted for the Villiers David Prize. Chamberlain's works have been shown in solo and group exhibitions in the United Kingdom and the United States.

[200 Mass / Conference Center](#)



House Near Lee's Bridge (Summer)

2013-2014
Oil on canvas
14" x 15"

House Near Lee's Bridge (Winter)

2013-2014
Oil on canvas
12" x 13"



Leonardo Cremonini

Italian 1925-2010

Leonardo Cremonini was born in Bologna and moved to Calabria with his family at the age of 11. Struck by the light and landscape of Southern Italy, influences that would stay with the artist throughout his life, he began making artwork seriously in his early teens. Cremonini was awarded a scholarship to study at the Beaux Arts Academy in Bologna, which he attended for four years. In 1945, he moved to Milan to attend the Brera Accademia di Belle Arti.

Cremonini's enigmatic multi-figure indoor and outdoor scenes attracted significant critical attention and have been the subject of over 50 critical essays by leading intellectuals. He received the Prix Marzotto and the Prix du President de la Republique d'Italie. Cremonini was a Commandeur des Arts et des Lettres en France and member of the l'Academie Royale de Belgique; the Accademia di San Luca in Rome; the Accademia delle Arti del Disegno in Florence; and the Academie des Beaux-Arts a l'Institut de France.

Cremonini's work has been the subject of a number of retrospective exhibitions. His work is included in major public and private collections around the world, including the Museum of Modern Art, New York; the Centre Pompidou; the Accademia Belle Arti Bologna; and the Galleria degli Uffizi.

[200 Mass / Reception Gallery](#)

Les Beaux Jeux

1987-1989

Oil on linen

57"x70"



Matthew Daub

American b.1951

Matthew Daub received his bachelor's and master's degrees from Southern Illinois University. He has been awarded grants and fellowships by Kutztown University, the Pollock-Krasner Foundation and Southern Illinois University.

Daub's charcoal drawings and watercolors have been exhibited throughout the United States and Europe and are included in private and public collections including the Metropolitan Museum of Art; the Museum of the City of New York; the Reading Public Museum; the Evansville Museum of Arts and Science; and the Owensboro Museum of Fine Art. He is a professor of fine art, specializing in watercolor painting, at Kutztown University in Pennsylvania.

[250 Mass / Floor 1 / West Gallery](#)
[200 Mass / Conference Center](#)

Ice
1997
Watercolor on paper
22" x 30"

Alley Near the High School
1998
Watercolor on paper
22" x 30"

**Independence Day: Berks County
Pennsylvania**
1998
Watercolor on paper
22" x 30"



Rahn's in Winter
2016
Conte crayon
45" x 68"



Thornton Dial

American 1928-2016

As a self-taught artist who had little education and no exposure to the formal art world, Thornton Dial developed a highly individual style through an extensive body of work spanning decades. In addition to drawings and paintings, Dial produced mixed-media artwork using plywood, canvas and plastics, recycling pieces when he needed materials. His work encompasses subjects ranging from the most intimate, personal experiences to the most expansive philosophical observations.

Dial's work was exhibited in a career retrospective at the Indianapolis Museum of Art in 2011 and is included in the collections of the Whitney Museum of American Art and the Metropolitan Museum of Art, New York; the Smithsonian American Art Museum in Washington DC; and the Philadelphia Museum of Art.

[200 Mass / Bridge Lobby](#)

Doctors and X-Rays

Detail
1994
Graphite on paper
44" x 30"



**Ladies and Mules
(Everybody Strives for a Home)**
1994
Graphite on paper
44" x 30"



Dancing in the Streets
1997
Charcoal and pastel on paper
44" x 30"



Passing by the Bird (2)
ND
Charcoal and pastel on paper
44" x 30"



Doctors and X-Rays
1994
Graphite on paper
44" x 30"



Looking for a Home
1998
Charcoal and pastel on paper
44" x 30"



Looking for the Main Road
1996
Charcoal on paper
44" x 30"



Holding on to the Nest (2)
ND
Charcoal and pastel on paper
44" x 30"



Holding on to the Tiger (2)
ND
Charcoal and pastel on paper
44" x 30"

Alison Hall

American b.1980

From a distance, Alison Hall's paintings appear to be monochrome color-field works. A closer look reveals intricate geometric patterns as light and shadows move across the surface.

Hall received a bachelor's degree from Hollins University and a master's from American University. She was a Bethesda Urban Partnership Fellow and has been awarded a fellowship by the Virginia Museum of Fine Arts. Hall currently lives and works in Brooklyn, New York.

[200 Mass / Reception Lobby](#)

The Imperishable Ones

2015

Oil, graphite and venetian
plaster on panel

106" x 70"



Nicola Hicks

English b.1960

Nicola Hicks, born in London, studied at the Chelsea School of Art and received a master's of fine art from the Royal College of Art. She has had major solo shows in leading museums and galleries and has been honored with an MBE for her contribution to the visual arts.

Hicks's primary works are sculptures in plaster and straw and huge sheets of brown paper on which she works up her dynamic charcoal drawings. Her work is represented in private and public collections, including the Yale Center for British Art, New Haven, Connecticut; Chatsworth House, Derbyshire; the Contemporary Art Society, London; and the Tate Gallery, London.

[250 Mass / Floor 2 / West Gallery](#)

Murder of Crows

1998
Charcoal and chalk on paper
77" x 116"

Puck

2003
Charcoal on paper
58" x 83"

Elephant

1998
Charcoal and pastel on paper
74" x 94"

JuYeon Kim

Korean b.1972

JuYeon Kim studied at Hong-Ik University, Seoul, Alfred University and the Tyler School of Art. Her work has been exhibited in New York, Philadelphia, Santa Fe and Beijing. Kim has been awarded several prestigious residencies, including the Triangle Artists' Workshop in New York and the Roswell Art in Residence Fellowship.

[250 Mass / Floor 2 / West Gallery](#)



Untitled

2004

Mixed media on canvas

90"x90"



Stanley Lewis

American b.1941

Stanley Lewis's sharply defined and textured paintings are done from direct observation and long looking. Inspired by Giacometti, wild about Courbet and influenced by such masters as ancient Greek vase painters, his process is one of constant revision. Operating under the principle that the more you correct the better a painting gets, his works are built from sessions of blocking in, painting over, cutting out, repositioning and painting over again.

Lewis received a bachelor's degree from Wesleyan University and both bachelor's and master's degrees from the Yale School of Art. His paintings and drawings were the subject of a retrospective at the American University Museum in the Katzen Arts Center in Washington and the Visual Arts Center of New Jersey and were featured in *See It Loud: Seven Post-War American Painters* at the National Academy Museum in 2014. Lewis lives and works in Leeds, Massachusetts.

[250 Mass / Reception Gallery](#)

Front Yard with Forsythia

Detail

2006-2010

Acrylic on paper

48" x 60"



Mark Lijftogt

Dutch b.1963

Born in Amsterdam, Lijftogt worked in an art restoration studio where he developed an interest in the classical traditions and materials of 17th century Dutch art. He often visited the Rijksmuseum to study the use of color and composition by the Old Masters.

Lijftogt's paintings are included in private and public collections in the United States, Canada, the Netherlands, United Kingdom, Germany, Italy, France and Norway. He lives and works in Overijssel, a province in the eastern Netherlands.

[200 Mass / Conference Center](#)



Cabinet with Bowl and Spoon

2012
Oil on board
13"x6"

Cabinet with Two Mother of Pearl Shells

2012
Oil on board
13"x6"



Raymond Mason

English 1922-2010

Raymond Mason studied at the Birmingham School of Arts and Crafts and the Slade School of Art and moved to Paris in 1946. He is known for his polychrome reliefs and monumental sculptures that incorporate landscapes, figures and crowds to convey a wide range of human emotion and experience within individual works. Also a noted painter and draftsman, he has done finely detailed watercolor studies of fruits, vegetables, flowers and people.

Mason purchased a house near Ménerbes in the Provençal countryside. Surrounded by vineyards, the house stood on a hill facing the northern slopes of the Petit Luberon. As a city dweller, Mason needed several years to realize how exceptional the views surrounding him were. "When the mistral wind blows, every tree and rock of the mountain opposite springs into such relief that I feel that I can stretch out my hand and touch it."

Mason is represented in public and private collections in the United States and in Europe, including the Hirshhorn Museum and Sculpture Garden, Washington, DC; the Metropolitan Museum of Art, New York; the Tate Gallery, London; and the Centre Pompidou, Paris. He was awarded the title Chevalier de l'Ordre des Arts et Lettres in 1978 and an Order of the British Empire in the New Year Honours 2002.

[200 Mass / Reception Lobby](#)

The Luberon Valley
1974
Watercolor on
paper
22" x 29"

Clouds with Green Field
1974
Watercolor and ink
on paper
22" x 29"

Grand Soleil du Midi
Detail
1975
Epoxy relief 1/8
41" x 78"



Study for Vines
1978
Watercolor and pencil
on paper
19"x24"

Champ-Chemin Paysage
1974
Watercolor and pencil
on paper
22"x30"

Provençal Landscape
1977
Ink on paper
23"x29"



Study for Ménerbes
1974
Ink on paper
21"x28"

Study for Le Roucas
1970
Ink on paper
20"x26"

Study for the Luberon
1970
Ink on paper
21"x20"



John Moore

American b.1941

John Moore, among the influential realist painters of his generation, paints cities, suburbs and urban sprawl with an almost hallucinatory clarity.

The everyday complicated vista that is seen and dismissed – boxy apartment blocks, bedraggled palm trees, rows of rooftops and parked cars – becomes in his work vivid and imposing.

Moore's works are in the collections of the Metropolitan Museum of Art; the Museum of Fine Arts in Boston; the Art Institute of Chicago; and the San Francisco Museum of Modern Art. From 1999 to 2009, he was Chair of the Department of Fine Arts at the University of Pennsylvania.

[250 Mass / Bridge Gallery](#)

Tibidabo
1996
Oil on canvas
72" x 72"

John Newman

American b.1952

John Newman graduated from Oberlin College and received a master's degree from the Yale School of Art. His sculptures combine a wide range of materials and techniques to create intricate and complex objects. Sisal and bark, braided copper wire, rice paper and paste and blown-glass are juxtaposed and fashioned into sometimes dense, sometimes delicate, aggregated forms.

Newman's work is represented in public collections including the Metropolitan Museum of Art, the Brooklyn Museum and the Whitney Museum of American Art, New York; the Art Institute of Chicago; the Museum of Fine Arts, Boston; the Tate Gallery, London; the National Gallery of Berlin; and the Albertina Museum, Vienna. Newman received a 2012 award in art given by the American Academy of Arts and Letters. He was awarded a Prix de Rome fellowship and has been a visiting critic at the School of Visual Arts and the New York Studio School of Drawing, Painting and Sculpture. He lives and works in New York.

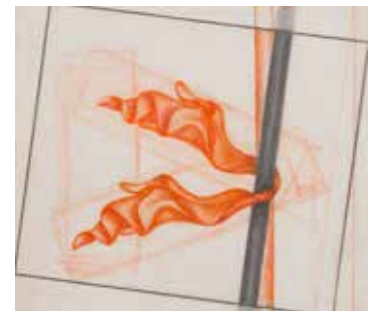
[200 Mass / Conference Center](#)



Untitled
2011
Graphite and colored
pencil on paper
12"x9"

Untitled
2011
Graphite and colored
pencil on paper
11"x12"

Untitled
2011
Graphite and colored
pencil on paper
9"x13"



Hadley Nunes

American b.1980

Hadley Nunes received a bachelor's degree from Smith College and a master's in painting from the New York Studio School of Drawing, Painting and Sculpture. She has received residencies from the Vermont Studio Center, the Old American Can Factory, the Elizabeth Foundation for the Arts and La Generale, Paris.

Nunes lives and works in Honolulu, Hawaii.

[250 Mass / West Gallery 4](#)



1+1=3
2010
Oil on canvas
54" x 56"



Stephanie Pierce

American b.1974

Stephanie Pierce graduated from The Art Institute of Boston and received a master's degree from the University of Washington, Seattle. She was awarded a Joan Mitchell Foundation Painters and Sculptors Grant and an Arkansas Arts Council Individual Artist Fellowship. Pierce has exhibited her work throughout the United States and is represented in the collections of the Museum of Fine Arts, Boston; the Boston Public Library; Scholastic Corporation, and the Joan and Roger Sonnabend Collection, among others.

[200 Mass / Conference Center](#)

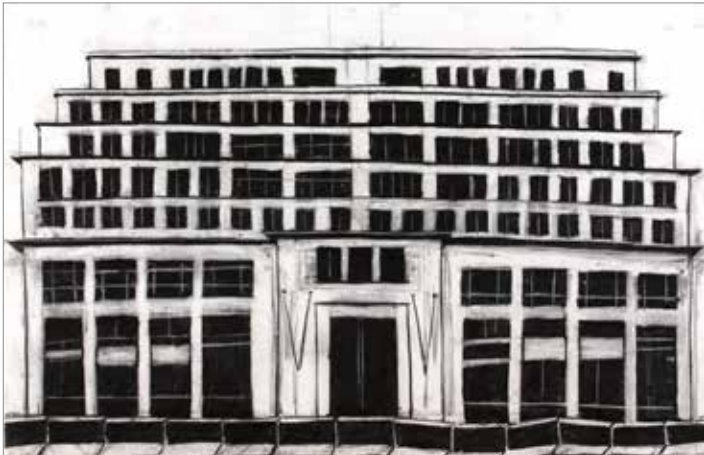
Discordant Wave

Detail

2014

Oil on canvas

50" x 64"



Karlis Rekevics

American b.1963

Karlis Rekevics's large scale drawings address subjects within the urban landscape so ubiquitous as to be almost invisible: construction signage, bridge girders, functional and non-descript architecture. In his handling these structures are revealed as powerful, even haunting, presences that are shaped by—and in turn shape—the consciousness of our daily life.

He attended the New York Studio School and the Hochschule der Kunst, Berlin. His work has been featured in exhibitions at PS 1 Contemporary Art Center, New York; the Sculpture Center, Long Island City, New York; the New York Studio School and Locks Gallery, Philadelphia. He lives and works in Brooklyn, New York.

[250 Mass / Bridge Gallery](#)

[250 Mass / Floor 1 / East Gallery](#)

Warning Against Confusion

2011
Charcoal on paper
108"x96"

Franklin Building, La Havre

2011
Charcoal on paper
32"x48"



E. M. Saniga

American b.1946

E.M. Saniga, inspired by the Amish countryside, presents a naturalistic yet mysterious vision of reality. His landscapes and figures are traditional in format yet marked with an unfamiliar difference.

His American influences include Eakins, Homer and Dickinson. European influences that can be seen in his work include Corot, Degas, Balthus and Vuillard, among others. Saniga studied at Pennsylvania State University and the Pennsylvania Academy of Fine Arts. His work is included in the collections of the Museum of the Pennsylvania Academy of Fine Arts

[200 Mass / Conference Center](#)



House Near Lee's Bridge (Summer)

2013-2014
Oil on canvas
14"x 15"

House Near Lee's Bridge (Winter)

2013-2014
Oil on canvas
12"x 13"



Beatrice Scaccia

Italian b.1978

Beatrice Scaccia received a bachelor's and master's degree from the Academy of Arts of Rome. Her work is included in the collections of the National Cultural Institute, Oslo; the Ministry of Foreign Affairs, Rome; and the Museum of Contemporary Art, Viareggio.

Her drawings, which combine oil, pencil and wax on paper, suggest the confusion of hidden identities: erased backgrounds, obscured faces and playful costumes that question where these genderless creatures come from and where they are going. Scaccia lives and works in New York.

[250 Mass / Floor 2 / West Gallery](#)



Call the Bluff 9

2016

Pencil, oil, gesso and wax on paper
60"x 44"

Call the Bluff 5

2016

Pencil, oil, gesso and wax on paper
60"x 44"



Peter Schmersal

German b.1952

Born in Wuppertal, Germany, Peter Schmersal paints figurative landscapes, domestic objects and portraits of those close to him, often emphasizing unexpected details that claim the viewer's attention.

Schmersal's rich texture and color typify his paintings. He is represented in public and private collections in the United States and Europe, including the Museum Frieder Burda in Baden-Baden and the Von der Heydt Museum in Wuppertal. Schmersal currently lives and works in Berlin.

[250 Mass / Floor 2 / West Gallery](#)

[250 Mass / Floor 1 / East Gallery](#)

Sitting Man (Peter Schad)

2003

Oil on canvas

79" x 47"



Water Tap, Wash Basin
2003
Oil on linen
53"x37"

Oven
2003
Oil on linen
53"x37"



Bottle for Gas
2002
Oil on linen
53"x37"



Eduard Schteinberg

Russian 1937-2012

Eduard Schteinberg's father, Arkady Schteinberg, was a poet and artist who, as "an enemy of the people," was imprisoned for many years. At age 17, Schteinberg and his family were forced to leave Moscow and relocate 130 miles away to Tarusa, a village and cultural center situated on the banks of the River Oka. He drew from this artistic community and visited and worked in Tarusa throughout his life.

After working as a custodian and fisherman, he turned to painting. By the 1970s, Schteinberg had adopted six shapes characteristic of Malevich's work – the cross, circle, prism, triangle, square, and sphere – through which he sought to join the mystical ideas of early 20th-century Russian symbolism with the plastic language of Suprematism.

[250 Mass / Bridge Gallery](#)



Composition

1992

Oil on linen

36" x 77"



Gunther Schützenhöfer

Austrian b.1965

Gunther Schützenhöfer was born in Mödling Austria, and is one of the most celebrated Gugging artists: a group working and living at the Haus der Künstler (House of Artists), established by Dr. Leo Navratil at the Lower Austrian Psychiatric Hospital in Gugging, just outside Vienna. Gugging artists are well known in the world of contemporary Art Brut and have exhibited their outsider art throughout the United States, Europe and Japan.

Schützenhöfer was invited to move into the Haus der Künstler in 1999. His works are stylized versions of everyday items drawn with graphite and colored pencils; his seemingly immature style depicts highly controlled and powerfully abstracted objects and figures.

[200 Mass / Conference Center](#)

A Bottle of Coke

2010
Graphite and colored pencil on paper
12"x 8"

Pepsi Bottle

2012
Graphite and colored pencil on paper
16"x 12"



Ferris Wheel

2015
Graphite on paper
39"x28"

Trousers with Holders

2015
Graphite on paper
39"x28"

Danielle Tegerer

American b.1971

Danielle Tegerer received a bachelor's degree from the State University of New York at Purchase and a master's degree from the School of the Art Institute of Chicago. She has participated in artist residencies including Yaddo, The Marie Walshe Sharpe Studio Program and Smackmellon Studio Residency.

Tegerer's work has been exhibited in solo shows in New York, Chicago, Houston, San Francisco, Los Angeles, Mexico City, Paris and Berlin. Her work is represented in the collections of the Museum of Modern Art, New York; the Weather-spoon Museum of Art, Greensboro, North Carolina; and the Museum of Contemporary Art, Chicago.

[200 Mass / Conference Center](#)



Hoshanouxmeh: Thermal Red Secret Universe Plan with Chemical Silver Suspended City with Classification of Color and Shape Language

2013

Gouache, ink, colored pencil, graphite and pastel on paper

79"x 55"



Greta Waller

American 1983

Greta Waller is interested in the properties of reflected light and how they can be represented in oil paint. She positions ice blocks on a variety of surfaces – the ice and resulting watery pool are interpreted in a range of subtle color variations and brushstrokes. “A driving force behind my painting is the study of light. Painting is my way of organizing and understanding the concepts of light and color.”

Waller received a bachelor’s degree in fine arts from Cooper Hewitt, New York, and a master’s degree from the University of California, Los Angeles. She lives and works in Los Angeles.

[250 Mass / East Gallery / Floor 2](#)

[250 Mass / East Gallery / Floor 1](#)



Struggle for Pleasure

2011
Oil on canvas
72”x 84”

Augustus

2011
Oil on canvas
48”x 60”

John Walker

English b.1939



John Walker studied at the Birmingham School of Art and the Academie de la Grande Chaumiere in Paris. His art is included in the collections of The Museum of Modern Art, the Metropolitan Museum of Art and the Solomon R. Guggenheim Museum, New York; the National Gallery of Art, the Hirshhorn Museum and Sculpture Garden and the Smithsonian Institution, Washington, DC; the British Museum and the Tate Gallery, London.

[200 Mass / Conference Center](#)

Untitled
2011-2014
Oil on canvas
48" x 36"



Hum
2002
Cast iron, fabricated and painted aluminum
29"×61"×61"

Alison Wilding

English b.1948

Alison Wilding's sculptures, large and small, combine a variety of materials, techniques and forms and explore relationships between the contrasting elements. She studied at Ravensbourne College of Art and Design, Bromley, Kent, and at the Royal College of Art, London.

In 1991 a retrospective exhibition was held at the Tate Gallery, Liverpool. She has exhibited throughout the United Kingdom and abroad in both solo and group shows, including at the Serpentine Gallery, London, and the Museum of Modern Art, New York.

Nominated for the Turner Prize in both 1988 and 1992, she was the recipient of the Henry Moore Fellowship for The British School at Rome in 1998 and was made a Royal Academician in 1999. Her work is included in the collections of the Tate Gallery, London; The British Council, Arts Council of England; FRAC Pays de la Loire, France; and Leeds City Art Gallery, among others. Wilding was made an Officer of the Order of the British Empire in the 2019 New Year Honours for services to art. She lives and works in London.

[250 Mass / Reception Gallery](#)



Purvis Young

American 1943-2010

Purvis Young first gained attention as an artist when he began making large mural-style paintings on plywood nailed to the exteriors of abandoned buildings, most famously in Goodbread Alley. Using found materials, including discarded doors, manila folders, cardboard and orange rates, he depicted life in the Overtown section of Miami.

As is characteristic of his work, these paintings are on scrap wood panels and other flat, rectangular materials that Young found on the street. These surfaces could be seen as metaphors for the human lives that are wasted in economically impoverished inner-city environments – castoffs tossed aside by society but capable of being reclaimed and restored to a certain glory.

Young is represented in The Studio Museum in Harlem, New York, New York; the Smithsonian American Art Museum, Washington, DC; the Philadelphia Museum of Art; the High Museum of Art, Atlanta; and The Museum of Fine Arts, Houston.

[250 Mass / Bridge Gallery](#)

**Untitled
(Three Heads with
People in Three Parts)**
ND
Paint on wood
97"×51"

**Untitled
(Yellow Pregnant Figure
in the City)**
ND
Paint on wood
96"×55"

**Untitled
(Horses and People
in Five Parts)**
ND
Paint on wood
100"×50"





Property Group Partners

PGP.us.com

Property Group Partners, formerly Louis Dreyfus Property Group, has developed, acquired and managed first-class office buildings in North America and Europe for over 40 years. Active in the Washington real estate market since the early 1970s, it developed and manages Station Place, the 1.6-million-square-foot development connected to Union Station that is the headquarters of the SEC. It also developed 1101 New York Avenue, 801 Seventeenth Street, the Four Seasons Hotel in Georgetown, and 2001 K Street.

The mixed-use development of Capitol Crossing, at the intersection of Capitol Hill and the East End, is an exciting new community in downtown Washington DC. Covering three newly built city blocks, it currently has over one million square feet of trophy office space completed and now leasing. The development will also include a residential building and the newest Capitol Hill hotel. In addition, the project has the approvals to build one more freestanding 700,000 square foot office building with Capitol views.

Art from The William Louis-Dreyfus Foundation at Capitol Crossing continues the tradition Jeffrey Sussman, president of PGP, and William Louis-Dreyfus started over 40 years ago of placing art in public places and making it available to a larger audience.

**Untitled
(Tall Red Man)**
Left
ND
Paint on wood
98"x50"



The William Louis-Dreyfus Foundation

WLDFoundation.org

William Louis-Dreyfus was a businessman, poet and committed art collector. He acquired works in Europe and the United States throughout his life, and his collection represents over 50 years of discovery and dedication.

Shaped by curiosity, an open mind and an unrelenting fascination with the power of visual media, Louis-Dreyfus's collection evolved into one of remarkable depth and diversity. In 2013 he founded The William Louis-Dreyfus Foundation, intended to promote the importance of art, to increase public awareness of self-taught and emerging artists and to support educational programs, especially those of the Harlem Children's Zone.

The selection of Foundation works on view here are intended to highlight the vitality and astonishing range of this entirely unique collection. Louis-Dreyfus used to comment on the "completeness" of a work of art as a positive attribute, and despite the variety of the works he collected they all tend to possess a distinct quality of resolution in relation to their varied stylistic and expressive purposes. Whether seen in the exacting verisimilitude of Matthew Daub's watercolors, the psychologically commanding interiors of Leonardo Cremonini, or the reverence of Thornton Dial's homages to women, these are the works of artists wholly committed to the worlds they have created on canvas and paper.

Untitled
(Horses and People in Five Parts)
Detail
ND
Paint on wood 100"x50"

Art from The William Louis-Dreyfus Foundation
presented by
Property Group Partners



The Galleries at Capitol Crossing
200 and 250 Massachusetts Avenue
Washington DC
Exhibition Installed October 2020

Art in the galleries of Capitol Crossing
from The William Louis-Dreyfus
Foundation. Art in the Conference Center
from Louis-Dreyfus Family Collection.

Additional Information
Ramey Lynch
RLynch@PGP.us.com
202 470-4900

Project Curation, Coordination and Design
Mary Anne Costello
Christina Kee
Tom Wood

Cover Art
Raymond Mason, *Clouds with Green Field*, 1974

This watercolor and ink drawing was made
when Mason began developing *Twin Sculptures*,
which was installed on the walls of the Four
Seasons Georgetown in 1988.

Commissioned by William Louis-Dreyfus,
the two-part sculpture imagines the planning
of the District by George Washington and
Pierre Charles L'Enfant.

